

140W
160W

□100×100mm

各型号电机性能 MOTOR PERFORMANCE

| 型号 MODEL | 最大输出功率(W) MAXIMUM OUTPUT POWER | 电压V VOLTAGE | 频率Hz FREQUENCY | 电流A CURRENT | 调速范围 r/min SPEED RANGE | 起动转矩 N·mm START TORQUE | 额定转矩(N·mm) RATED TORQUE | | 运行电容 RUNNING CAPACITOR | |
|---|-----------------------------------|---------------------------|-------------------|----------------|------------------------------|------------------------------|----------------------------|-----------|---------------------------|------|
| | | | | | | | 1200r/min | 90r/min | | |
| 齿轮轴 GEAR SHAFT 100YS140GV11 100YT140GV11 100YB140GV11 100YF140GV11 | 140 | Single phase 单相 110 | 50Hz | 2.26 | 90-1300 | 840 | 1050 | 350 | 28μf/250V | |
| 圆轴 ROUND SHAFT 100YS140DV11 100YT140DV11 100YB140DV11 100YF140DV11 | | | | | | | | | | 60Hz |
| 齿轮轴 GEAR SHAFT 100YS140GV22 100YT140GV22 100YB140GV22 100YF140GV22 | | | 50Hz | 1.13 | 90-1300 | 840 | 1050 | 350 | | |
| 圆轴 ROUND SHAFT 100YS140DV22 100YT140DV22 100YB140DV22 100YF140DV22 | | | | | | | | | | 60Hz |
| 齿轮轴 GEAR SHAFT 100YS140GY22 100YB140GY22 | 140 | Three phase 三相 220 | 50Hz | 0.95 | 90-1300 | 1393 | 1078 | | | |
| 圆轴 ROUND SHAFT 100YS140DY22 100YB140DY22 | | | 60Hz | 0.88 | 90-1600 | 1183 | 875 | | | |
| 齿轮轴 GEAR SHAFT 100YS140GY38 100YB140GY38 | 140 | Three phase 三相 380 | 50Hz | 0.55 | 90-1300 | 1393 | 1078 | | | |
| 圆轴 ROUND SHAFT 100YS140DY38 100YB140DY38 | | | 60Hz | 0.48 | 90-1600 | 1183 | 875 | | | |
| 齿轮轴 GEAR SHAFT 100YS160GV11 100YT160GV11 100YB160GV11 100YF160GV11 | 160 | Single phase 单相 110 | 50Hz | 2.60 | 90-1300 | 900 | 1250 | 28μf/250V | | |
| 圆轴 ROUND SHAFT 100YS160DV11 100YT160DV11 100YB160DV11 100YF160DV11 | | | 60Hz | 2.34 | 90-1600 | 750 | 1250 | | | |
| 齿轮轴 GEAR SHAFT 100YS160GV22 100YT160GV22 100YB160GV22 100YF160GV22 | 160 | Single phase 单相 220 | 50Hz | 1.30 | 90-1300 | 900 | 1250 | | 8μf/450V | |
| 圆轴 ROUND SHAFT 100YS160DV22 100YT160DV22 100YB160DV22 100YF160DV22 | | | 60Hz | 1.17 | 90-1600 | 750 | 1250 | | | |
| 齿轮轴 GEAR SHAFT 100YS160GY22 100YB160GY22 | 160 | Three phase 三相 220 | 50Hz | 1.21 | 90-1300 | 1590 | 1248 | | | |
| 圆轴 ROUND SHAFT 100YS160DY22 100YB160DY22 | | | 60Hz | 1.09 | 90-1600 | 1353 | 1005 | | | |
| 齿轮轴 GEAR SHAFT 100YS160GY38 100YB160GY38 | 160 | Three phase 三相 380 | 50Hz | 0.70 | 90-1300 | 1590 | 1248 | | | |
| 圆轴 ROUND SHAFT 100YS160DY38 100YB160DY38 | | | 60Hz | 0.50 | 90-1600 | 1353 | 1005 | | | |

•虽然调速电机的调速范围为：50Hz...90~1300r/min；60Hz...90~1600r/min。但由于低速时(<400r/min)，电机转矩下降较多，易发生过载，且电机直连风扇冷却效果差，易发热，因此必须预留足够的功率余量，并且不要经常工作在低速区。因此电机最佳调速范围为：50Hz...400~1300r/min；60Hz...400~1600r/min。

•在断开电源的同时，电机将瞬间停止并保持负载。

•Although the speed range of the motor is 50Hz, 90~1300r/min, 60Hz, 90~1600r/min, it easily causes overload and the cooling effect of the motor fan is poor if the speed is too low (<400r/min) and the motor torque decreases too much; therefore, please keep sufficient power margin and avoid operating in low speed section frequently. The optimal speed range of the motor is 50Hz, 400~1300r/min, 60Hz, 400~1600r/min.

•When the power is cut off, the motor will stop immediately and hold the load.

减速箱减速比性能对照表 REDUCTION RATIO PERFORMANCE CHART

| 减速比 REDUCTION RATIO | 3 | 3.6 | 5 | 6 | 7.5 | 10 | 12.5 | 15 | 18 | 20 | 25 | 30 |
|---|-------|-------|-------|-------|-------|------|-------|-------|-------|-------|-------|-------|
| 140W 50Hz 最高转速r/min Output bearing speed | 433 | 361 | 260 | 217 | 173 | 130 | 104 | 87 | 72 | 65 | 52 | 43 |
| 额定转矩N·m Rated torque | 2.62 | 3.15 | 4.37 | 5.25 | 6.56 | 7.51 | 9.38 | 11.26 | 13.51 | 15.02 | 18.77 | 21.91 |
| 60Hz 最高转速r/min Output bearing speed | 533 | 444 | 320 | 267 | 213 | 160 | 128 | 107 | 89 | 80 | 64 | 53 |
| 额定转矩N·m Rated torque | 2.19 | 2.62 | 3.64 | 4.37 | 5.46 | 6.26 | 7.82 | 9.38 | 11.26 | 12.51 | 15.64 | 18.26 |
| 160W 50Hz 最高转速r/min Output bearing speed | 433 | 361 | 260 | 217 | 173 | 130 | 104 | 87 | 72 | 65 | 52 | 43 |
| 额定转矩N·m Rated torque | 2.76 | 3.31 | 4.60 | 5.52 | 6.90 | 9.20 | 11.5 | 13.8 | 16.56 | 18.4 | 23.0 | 27.6 |
| 60Hz 最高转速r/min Output bearing speed | 533 | 444 | 320 | 267 | 213 | 160 | 128 | 107 | 89 | 80 | 64 | 53 |
| 额定转矩N·m Rated torque | 2.48 | 2.98 | 4.14 | 4.97 | 6.21 | 8.28 | 10.35 | 12.42 | 14.9 | 16.56 | 20.7 | 24.84 |
| 减速比 REDUCTION RATIO | 36 | 40 | 50 | 60 | 75 | 90 | 100 | 120 | 150 | 180 | 200 | |
| 140W 50Hz 最高转速r/min Output bearing speed | 36 | 33 | 26 | 22 | 17 | 14 | 13 | 11 | 9 | 7 | 7 | |
| 额定转矩N·m Rated torque | 26.29 | 29.21 | 33.94 | 40.73 | 44 | 44 | 44 | 44 | 44 | 44 | 44 | |
| 60Hz 最高转速r/min Output bearing speed | 44 | 40 | 32 | 27 | 21 | 18 | 16 | 13 | 11 | 9 | 8 | |
| 额定转矩N·m Rated torque | 21.91 | 24.34 | 28.28 | 33.94 | 40.73 | 44 | 44 | 44 | 44 | 44 | 44 | |
| 160W 50Hz 最高转速r/min Output bearing speed | 36 | 33 | 26 | 22 | 17 | 14 | 13 | 11 | 9 | 7 | 7 | |
| 额定转矩N·m Rated torque | 33.12 | 36.8 | 44 | 44 | 44 | 44 | 44 | 44 | 44 | 44 | 44 | |
| 60Hz 最高转速r/min Output bearing speed | 44 | 40 | 32 | 27 | 21 | 18 | 16 | 13 | 11 | 9 | 8 | |
| 额定转矩N·m Rated torque | 29.80 | 33.12 | 44 | 44 | 44 | 44 | 44 | 44 | 44 | 44 | 44 | |

•表中转速是以电机的平均转速(50Hz:1300r/min、60Hz:1600r/min)为基数除以减速比而算出的数值。

•实际转速随负载大小而少量变化，变化范围为±8%左右。

•The speed in the table is the value of average motor speed (50Hz: 1300r/min, 60Hz: 1600r/min) divided by the reduction ratio.

•The actual speed changes according to the load (±8%).



标准减速箱
STANDARD GEARBOX
100GF □H



直角中空减速箱
RIGHT ANGLE HOLLOW GEARBOX
L100GF □RC



直角中实减速箱
RIGHT ANGLE SOLID GEARBOX
L100GF □RT

减速箱型号中的□为减速比的数值
速比：1:3~200
□ in gearbox model indicates the reduction ratio (1:3~200)

180W
200W

□100×100mm

各型号电机性能 MOTOR PERFORMANCE

| 型号 MODEL | 最大输出功率(W) MAXIMUM OUTPUT POWER | 电压V VOLTAGE | 频率Hz FREQUENCY | 电流A CURRENT | 调速范围 r/min SPEED RANGE | 起动转矩 N·mm START TORQUE | 额定转矩(N·mm) RATED TORQUE | | 运行电容 RUNNING CAPACITOR | | | |
|---|-----------------------------------|---------------------------|-------------------|---------------------------|------------------------------|------------------------------|----------------------------|---------|---------------------------|-----------|-----------|-----------|
| | | | | | | | 1200r/min | 90r/min | | | | |
| 齿轮轴 GEAR SHAFT 100YS180GV11 100YT180GV11 100YB180GV11 100YF180GV11 | 180 | Single phase 单相 110 | 50Hz | 3.00 | 90-1300 | 1050 | 1450 | | 32μf/250V | | | |
| 圆轴 ROUND SHAFT 100YS180DV11 100YT180DV11 100YB180DV11 100YF180DV11 | | | 60Hz | 2.70 | 90-1600 | 880 | 1450 | | | | | |
| 齿轮轴 GEAR SHAFT 100YS180GV22 100YT180GV22 100YB180GV22 100YF180GV22 | | | 180 | Single phase 单相 220 | 50Hz | 1.50 | 90-1300 | 1050 | | 1450 | | 10μf/450V |
| 圆轴 ROUND SHAFT 100YS180DV22 100YT180DV22 100YB180DV22 100YF180DV22 | | | | | 60Hz | 1.35 | 90-1600 | 880 | | 1450 | | |
| 齿轮轴 GEAR SHAFT 100YS180GY22 100YB180GY22 | 180 | Three phase 三相 220 | | | 50Hz | 1.30 | 90-1300 | 1790 | 1418 | | | |
| 圆轴 ROUND SHAFT 100YS180DY22 100YB180DY22 | | | | | 60Hz | 1.17 | 90-1600 | 1523 | 1135 | | | |
| 齿轮轴 GEAR SHAFT 100YS180GY38 100YB180GY38 | 180 | Three phase 三相 380 | 50Hz | 0.75 | 90-1300 | 1790 | 1418 | | | | | |
| 圆轴 ROUND SHAFT 100YS180DY38 100YB180DY38 | | | 60Hz | 0.67 | 90-1600 | 1523 | 1135 | | | | | |
| 齿轮轴 GEAR SHAFT 100YS200GV11 100YT200GV11 100YB200GV11 100YF200GV11 | 200 | Single phase 单相 110 | 50Hz | 3.38 | 90-1300 | 1150 | 1650 | | | 32μf/250V | | |
| 圆轴 ROUND SHAFT 100YS200DV11 100YT200DV11 100YB200DV11 100YF200DV11 | | | 60Hz | 3.08 | 90-1600 | 930 | 1330 | | | | | |
| 齿轮轴 GEAR SHAFT 100YS200GV22 100YT200GV22 100YB200GV22 100YF200GV22 | | | 200 | Single phase 单相 220 | 50Hz | 1.69 | 90-1300 | 1150 | 1650 | | 10μf/450V | |
| 圆轴 ROUND SHAFT 100YS200DV22 100YT200DV22 100YB200DV22 100YF200DV22 | | | | | 60Hz | 1.54 | 90-1600 | 930 | 1330 | | | |
| 齿轮轴 GEAR SHAFT 100YS200GY22 100YB200GY22 | 200 | Three phase 三相 220 | | | 50Hz | 1.82 | 90-1300 | 1990 | 1540 | | | |
| 圆轴 ROUND SHAFT 100YS200DY22 100YB200DY22 | | | | | 60Hz | 1.64 | 90-1600 | 1690 | 1250 | | | |
| 齿轮轴 GEAR SHAFT 100YS200GY38 100YB200GY38 | 200 | Three phase 三相 380 | 50Hz | 1.05 | 90-1300 | 1990 | 1540 | | | | | |
| 圆轴 ROUND SHAFT 100YS200DY38 100YB200DY38 | | | 60Hz | 0.95 | 90-1600 | 1690 | 1250 | | | | | |

*虽然调速电机的调速范围为：50Hz...90~1300r/min；60Hz...90~1600r/min。但由于低速时(<400r/min)，电机转矩下降较多，易发生过载，且电机直连风扇冷却效果差，易发热，因此必须预留足够的功率余量，并且不要经常工作在低速区。因此电机最佳调速范围为：50Hz...400~1300r/min；60Hz...400~1600r/min。

*在断开电源的同时，电机瞬间停止关保持负载。

*Although the speed range of the motor is 50Hz, 90~1300r/min, 60Hz, 90~1600r/min, it easily causes overload and the cooling effect of the motor fan is poor if the speed is too low (<400r/min) and the motor torque decreases too much; therefore, please keep sufficient power margin and avoid operating in low speed section frequently. The optimal speed range of the motor is 50Hz, 400~1300r/min, 60Hz, 400~1600r/min.

*When the power is cut off, the motor will stop immediately and hold the load.

减速箱减速比性能对照表 REDUCTION RATIO PERFORMANCE CHART

| 减速比 REDUCTION RATIO | | 3 | 3.6 | 5 | 6 | 7.5 | 10 | 12.5 | 15 | 18 | 20 | 25 | 30 | |
|-------------------------|------|-----------------------------------|------|------|------|------|-------|-------|-------|-------|-------|-------|-------|----|
| 180W | 50Hz | 最高转速r/min Output bearing speed | 433 | 361 | 260 | 217 | 173 | 130 | 104 | 87 | 72 | 65 | 52 | 43 |
| | 60Hz | 最高转速r/min Output bearing speed | 533 | 444 | 320 | 267 | 213 | 160 | 128 | 107 | 89 | 80 | 64 | 53 |
| 200W | 50Hz | 最高转速r/min Output bearing speed | 433 | 361 | 260 | 217 | 173 | 130 | 104 | 87 | 72 | 65 | 52 | 43 |
| | 60Hz | 最高转速r/min Output bearing speed | 533 | 444 | 320 | 267 | 213 | 160 | 128 | 107 | 89 | 80 | 64 | 53 |
| 额定转矩N·m Rated torque | | 3.10 | 3.72 | 5.16 | 6.19 | 7.74 | 10.32 | 12.9 | 15.48 | 18.58 | 20.64 | 25.8 | 30.96 | |
| 额定转矩N·m Rated torque | | 2.76 | 3.31 | 4.60 | 5.52 | 6.90 | 9.20 | 11.50 | 13.80 | 16.56 | 18.40 | 23.0 | 27.6 | |
| 额定转矩N·m Rated torque | | 3.44 | 4.13 | 5.73 | 6.88 | 8.60 | 11.46 | 14.33 | 17.19 | 18.51 | 20.57 | 25.71 | 30.85 | |
| 额定转矩N·m Rated torque | | 2.87 | 3.44 | 4.78 | 5.73 | 7.16 | 9.55 | 11.94 | 14.33 | 15.43 | 17.14 | 21.43 | 25.71 | |

| 减速比 REDUCTION RATIO | | 36 | 40 | 50 | 60 | 75 | 90 | 100 | 120 | 150 | 180 | 200 | |
|-------------------------|------|-----------------------------------|-------|-------|----|----|----|-----|-----|-----|-----|-----|----|
| 180W | 50Hz | 最高转速r/min Output bearing speed | 36 | 33 | 26 | 22 | 17 | 14 | 13 | 11 | 9 | 7 | 7 |
| | 60Hz | 最高转速r/min Output bearing speed | 44 | 40 | 32 | 27 | 21 | 18 | 16 | 13 | 11 | 9 | 8 |
| 200W | 50Hz | 最高转速r/min Output bearing speed | 36 | 33 | 26 | 22 | 17 | 14 | 13 | 11 | 9 | 7 | 7 |
| | 60Hz | 最高转速r/min Output bearing speed | 44 | 40 | 32 | 27 | 21 | 18 | 16 | 13 | 11 | 9 | 8 |
| 额定转矩N·m Rated torque | | 37.15 | 41.28 | 44 | 44 | 44 | 44 | 44 | 44 | 44 | 44 | 44 | 44 |
| 额定转矩N·m Rated torque | | 33.48 | 37.2 | 44 | 44 | 44 | 44 | 44 | 44 | 44 | 44 | 44 | 44 |
| 额定转矩N·m Rated torque | | 37.02 | 41.14 | 44 | 44 | 44 | 44 | 44 | 44 | 44 | 44 | 44 | 44 |
| 额定转矩N·m Rated torque | | 30.85 | 34.28 | 42.85 | 44 | 44 | 44 | 44 | 44 | 44 | 44 | 44 | 44 |

*表中转速是以电机的平均转速(50Hz:1300r/min、60Hz:1600r/min)为基数除以减速比而算出的数值。
*实际转速随负载大小而少量变化，变化范围为±8%左右。
*The speed in the table is the value of average motor speed (50Hz: 1300r/min, 60Hz: 1600r/min) divided by the reduction ratio.
*The actual speed changes according to the load (±8%).



标准减速箱
STANDARD GEARBOX
100GF □H



直角中空减速箱
RIGHT ANGLE HOLLOW GEARBOX
L100GF □RC



直角中实减速箱
RIGHT ANGLE SOLID GEARBOX
L100GF □RT

减速箱型号中的□为减速比的数值

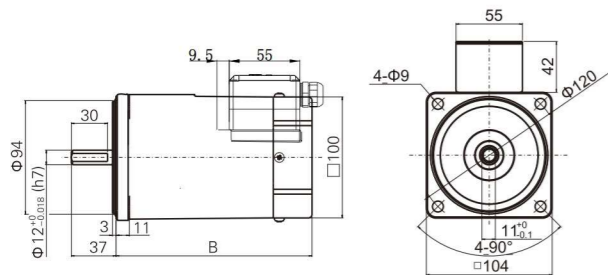
速比：1:3~200

□ in gearbox model indicates the reduction ratio (1:3~200)

外形尺寸 (CAD) DIMENSIONS

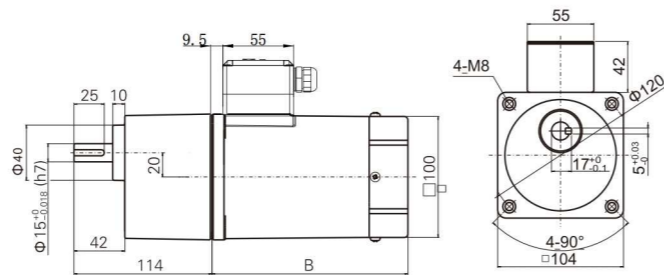
140/160/180/200/250YS/YT/YB/YF01

圆轴电机 重量:4.6kg
Round-axis motor, weight:4.6kg



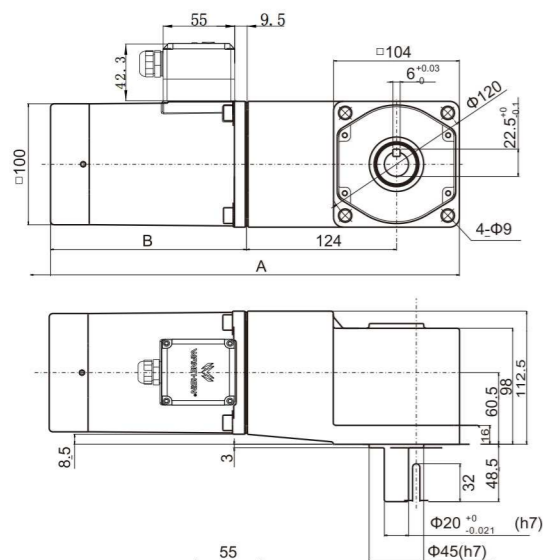
140/160/180/200/250YS/YT/YB/YF02

组合:电机+标准减速机(减速比:1:3~200) 重量:6.8kg
Combination: motor+standard gearbox (reduction ratio:1:3~200), weight:6.8kg



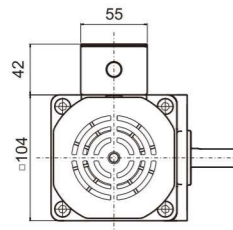
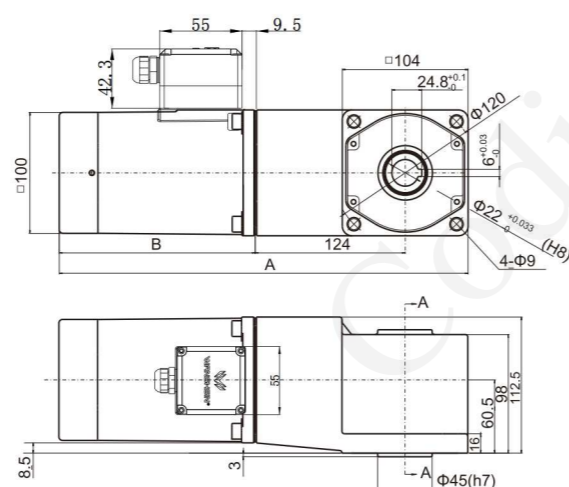
140/160/180/200/250YS/YT/YB/YF03

组合:电机+直角中实减速箱
减速比:1:3~200
重量:8.8kg
Combination: motor+right angle solid gearbox
reduction ratio:1:3~200
weight:8.8kg

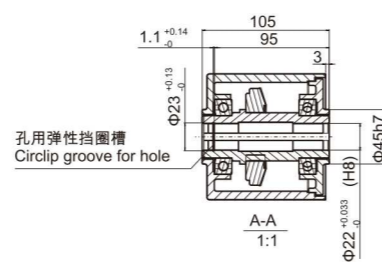


140/160/180/200/250YS/YT/YB/YF04

组合:电机+直角中空减速箱
减速比:1:3~200
重量:8.6kg
Combination: motor+right angle hollow gearbox
reduction ratio:1:3~200
weight:8.6kg



| 序号 No. | 电机类型 Motor type | A | B |
|-----------|--------------------|-----|-----|
| 1 | YS | 338 | 162 |
| 2 | YT | 354 | 178 |
| 3 | YB | 368 | 192 |
| 4 | YF | 390 | 214 |



250W

□100×100mm

各型号电机性能 MOTOR PERFORMANCE

| 型号 MODEL | 最大输出功率(W) MAXIMUM OUTPUT POWER | 电压V VOLTAGE | 频率Hz FREQUENCY | 电流A CURRENT | 调速范围 r/min SPEED RANGE | 起动转矩 N·mm START TORQUE | 额定转矩(N·mm) RATED TORQUE | | 运行电容 RUNNING CAPACITOR |
|---|-----------------------------------|---------------------------|-------------------|----------------|------------------------------|------------------------------|----------------------------|-----------|---------------------------|
| | | | | | | | 1200r/min | 90r/min | |
| 齿轮轴 GEAR SHAFT 100YS250GV11 100YT250GV11 100YB250GV11 100YF250GV11 | 250 | Single phase 单相 110 | 50Hz | 3.60 | 90-1300 | 1250 | 1850 | 40uf/250V | |
| 圆轴 ROUND SHAFT 100YS250DV11 100YT250DV11 100YB250DV11 100YF250DV11 | | | 60Hz | 2.24 | 90-1600 | 980 | 1850 | | |
| 齿轮轴 GEAR SHAFT 100YS250GV22 100YT250GV22 100YB250GV22 100YF250GV22 | 250 | Single phase 单相 220 | 50Hz | 1.80 | 90-1300 | 1250 | 1850 | 12uf/450V | |
| 圆轴 ROUND SHAFT 100YS250DV22 100YT250DV22 100YB250DV22 100YF250DV22 | | | 60Hz | 1.62 | 90-1600 | 980 | 1850 | | |
| 齿轮轴 GEAR SHAFT 100YS250GY22 100YB250GY22 | 250 | Three phase 三相 220 | 50Hz | 1.82 | 90-1300 | 2110 | 1670 | | |
| 圆轴 ROUND SHAFT 100YS250DY22 100YB250DY22 | | | 60Hz | 1.64 | 90-1600 | 1860 | 1380 | | |
| 齿轮轴 GEAR SHAFT 100YS250GY38 100YB250GY38 | 250 | Three phase 三相 380 | 50Hz | 1.05 | 90-1300 | 2110 | 1670 | | |
| 圆轴 ROUND SHAFT 100YS250DY38 100YB250DY38 | | | 60Hz | 0.95 | 90-1600 | 1860 | 1380 | | |

•虽然调速电机的调速范围为：50Hz...90~1300r/min；60Hz...90~1600r/min。但由于低速时(<400r/min)，电机转矩下降较多，易发生过载，且电机直连风扇冷却效果差，易发热，因此必须预留足够的功率余量，并且不要经常工作在低速区。因此电机最佳调速范围为：50Hz...400~1300r/min；60Hz...400~1600r/min。

•在断开电源的同时，电机瞬间停止关保持负载。

•Although the speed range of the motor is 50Hz, 90~1300r/min, 60Hz, 90~1600r/min, it easily causes overload and the cooling effect of the motor fan is poor if the speed is too low (<400r/min) and the motor torque decreases too much; therefore, please keep sufficient power margin and avoid operating in low speed section frequently. The optimal speed range of the motor is 50Hz, 400~1300r/min, 60Hz, 400~1600r/min.

•When the power is cut off, the motor will stop immediately and hold the load.

减速箱减速比性能对照表 REDUCTION RATIO PERFORMANCE CHART

| 减速比 REDUCTION RATIO | 3 | 3.6 | 5 | 6 | 7.5 | 10 | 12.5 | 15 | 18 | 20 | 25 | 30 |
|---|------|------|------|------|-------|-------|-------|-------|-------|-------|-------|-------|
| 250W 50Hz 最高转速r/min Output bearing speed | 433 | 361 | 260 | 217 | 173 | 130 | 104 | 87 | 72 | 65 | 52 | 43 |
| 额定转矩N·m Rated torque | 4.26 | 5.11 | 7.1 | 8.52 | 10.65 | 14.2 | 17.75 | 21.3 | 25.56 | 28.4 | 35.5 | 42.6 |
| 60Hz 最高转速r/min Output bearing speed | 533 | 444 | 320 | 267 | 213 | 160 | 128 | 107 | 89 | 80 | 64 | 53 |
| 额定转矩N·m Rated torque | 3.83 | 4.6 | 6.39 | 7.67 | 9.59 | 12.78 | 15.98 | 19.17 | 23 | 25.56 | 31.95 | 38.34 |
| 减速比 REDUCTION RATIO | 36 | 40 | 50 | 60 | 75 | 90 | 100 | 120 | 150 | 180 | 200 | |
| 140W 50Hz 最高转速r/min Output bearing speed | 36 | 33 | 26 | 22 | 17 | 14 | 13 | 11 | 9 | 7 | 7 | |
| 额定转矩N·m Rated torque | 44 | 44 | 44 | 44 | 44 | 44 | 44 | 44 | 44 | 44 | 44 | |
| 60Hz 最高转速r/min Output bearing speed | 44 | 40 | 32 | 27 | 21 | 18 | 16 | 13 | 11 | 9 | 8 | |
| 额定转矩N·m Rated torque | 44 | 44 | 44 | 44 | 44 | 44 | 44 | 44 | 44 | 44 | 44 | |

表中转速是以电机的平均转速(50Hz:1300r/min、60Hz:1600r/min)为基数除以减速比而算出的数值。
 实际转速随负载大小而少量变化，变化范围为±8%左右。
 *The speed in the table is the value of average motor speed (50Hz: 1300r/min, 60Hz: 1600r/min) divided by the reduction ratio.
 *The actual speed changes according to the load (±8%).



标准减速箱
STANDARD GEARBOX
100GF □H



直角中空减速箱
RIGHT ANGLE HOLLOW GEARBOX
L100GF □RC



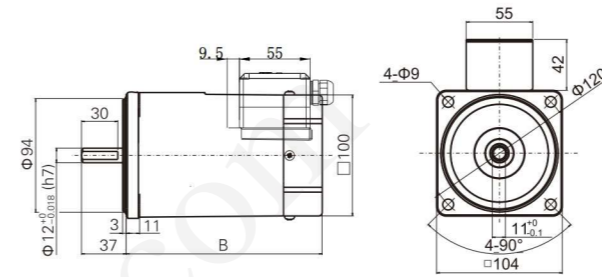
直角中实减速箱
RIGHT ANGLE SOLID GEARBOX
L100GF □RT

减速箱型号中的□为减速比的数值
 速比：1:3~200
 □ in gearbox model indicates the reduction ratio (1:3~200)

外形尺寸 (CAD) DIMENSIONS

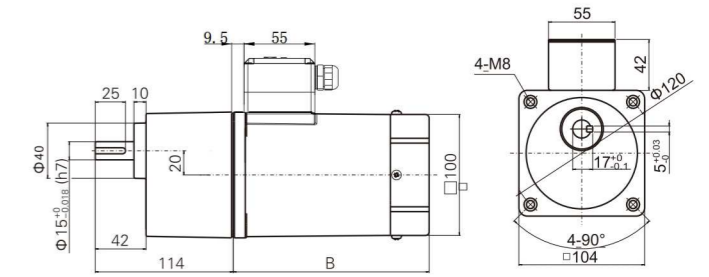
140/160/180/200/250YS/YT/YB/YF01

圆轴电机 重量:4.6kg
 Round-axis motor, weight:4.6kg



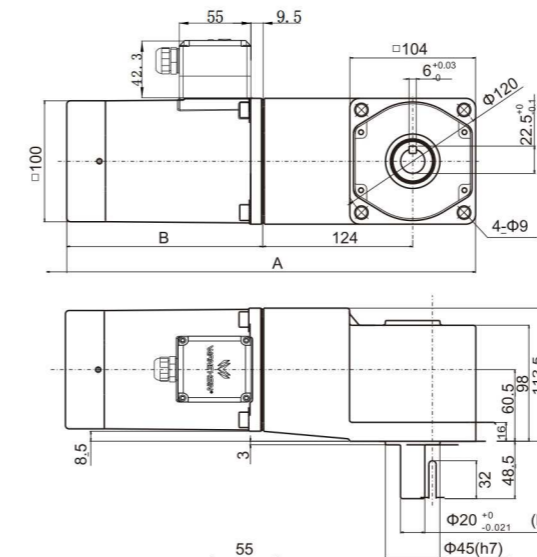
140/160/180/200/250YS/YT/YB/YF02

组合:电机+标准减速机(减速比:1:3~200) 重量:6.8kg
 Combination: motor+standard gearbox(reduction ratio:1:3~200), weight:6.8kg



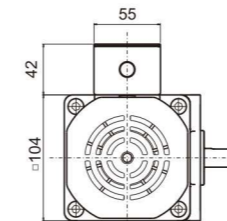
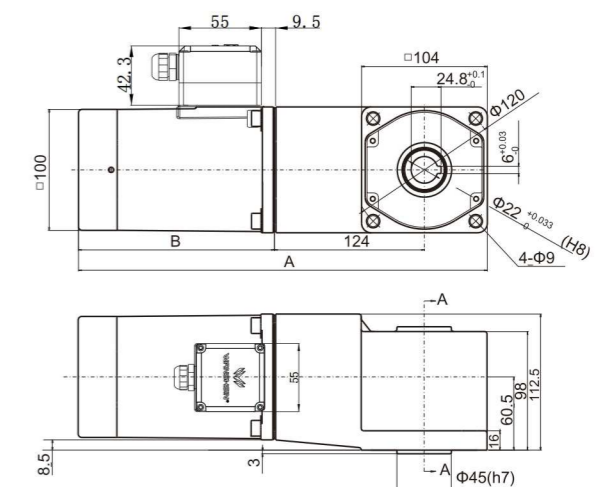
140/160/180/200/250YS/YT/YB/YF03

组合:电机+直角中实减速箱
 减速比:1:3~200
 重量:8.8kg
 Combination: motor+right angle solid gearbox
 reduction ratio:1:3~200
 weight:8.8kg



140/160/180/200/250YS/YT/YB/YF04

组合:电机+直角中空减速箱
 减速比:1:3~200
 重量:8.6kg
 Combination: motor+right angle hollow gearbox
 reduction ratio:1:3~200
 weight:8.6kg



| 序号 No. | 电机类型 Motor type | A | B |
|-----------|--------------------|-----|-----|
| 1 | YS | 338 | 162 |
| 2 | YT | 354 | 178 |
| 3 | YB | 368 | 192 |
| 4 | YF | 390 | 214 |

