

25W

□80×80mm

各型号电机性能 MOTOR PERFORMANCE


型号 MODEL	最大输出 功率(W) MAXIMUM OUTPUT POWER	电压V VOLTAGE	频率Hz FREQUENCY	电流A CURRENT	调速范围 r/min SPEED RANGE	起动转矩 m·N·m START TORQUE	额定转矩(mN·m) RATED TORQUE 1200r/min 90r/min	运行电容 RUNNING CAPACITOR
齿轮轴 GEAR SHAFT 80YS25GV11 80YR25GV11 80YT25GV11 80YB25GV11	25	Single phase 单相 110	50Hz	0.53	90-1300	145	170 45	8μf/250V
圆轴 ROUND SHAFT 80YS25DV11 80YR25DV11 80YT25DV11 80YB25DV11	60Hz		0.48	90-1600	120	170 45		
齿轮轴 GEAR SHAFT 80YS25GV22 80YR25GV22 80YT25GV22 80YB25GV22	25	Single phase 单相 220	50Hz	0.25	90-1300	145	205 50	2μf/450V
圆轴 ROUND SHAFT 80YS25DV22 80YR25DV22 80YT25DV22 80YB25DV22	60Hz		0.23	90-1600	120	205 50		
齿轮轴 GEAR SHAFT 80YS25GY22 80YB25GY22	25	Three phase 三相 220	50Hz	0.25	90-1300	250	195	
圆轴 ROUND SHAFT 80YS25DY22 80YB25DY22			60Hz	0.23	90-1600	205	160	
齿轮轴 GEAR SHAFT 80YS25GY38 80YB25GY38	25	Three phase 三相 380	50Hz	0.14	90-1300	250	195	
圆轴 ROUND SHAFT 80YS25DY38 80YB25DY38			60Hz	0.13	90-1600	205	160	

- 虽然调速电机的调速范围为：50Hz...90~1300r/min；60Hz...90~1600r/min。但由于低速时(<400r/min)，电机转矩下降较多，易发生过载，且电机直连风扇冷却效果差，易发热，因此必须预留足够的功率余量，并且不要经常工作在低速区。因此电机最佳调速范围为：50Hz...400~1300r/min；60Hz...400~1600r/min。
- 在断开电源的同时，电机瞬间停止关保持负载。
- Although the speed range of the motor is 50Hz, 90~1300r/min, 60Hz, 90~1600r/min, it easily causes overload and the cooling effect of the motor fan is poor if the speed is too low (<400r/min) and the motor torque decreases too much; therefore, please keep sufficient power margin and avoid operating in low speed section frequently. The optimal speed range of the motor is 50Hz, 400~1300r/min, 60Hz, 400~1600r/min.
- When the power is cut off, the motor will stop immediately and hold the load.


减速箱减速比性能对照表 REDUCTION RATIO PERFORMANCE CHART

减速比REDUCTION RATIO	3	3.6	5	6	7.5	10	12.5	15	18	20	25	30
50Hz 最高转速r/min Max output speed	433	361	260	217	173	130	104	87	72	65	52	43
额定转矩N·m Rated torque	0.50	0.60	0.83	0.99	1.24	1.65	1.95	2.34	2.81	3.12	3.90	4.68
60Hz 最高转速r/min Max output speed	533	444	320	267	213	160	128	107	89	80	64	53
额定转矩N·m Rated torque	0.41	0.50	0.69	0.83	1.03	1.38	1.63	1.95	2.34	2.60	3.25	3.90
减速比REDUCTION RATIO	36	40	50	60	75	90	100	120	150	180	200	
50Hz 最高转速r/min Max output speed	36	33	26	22	17	14	13	11	9	7	7	
额定转矩N·m Rated torque	5.62	6.24	6.89	8	8	8	8	8	8	8	8	
60Hz 最高转速r/min Max output speed	44	40	32	27	21	18	16	13	11	9	8	
额定转矩N·m Rated torque	4.68	5.20	5.74	6.88	8	8	8	8	8	8	8	


- 表中转速是以电机的平均转速(50Hz:1300r/min、60Hz:1600r/min)为基数除以减速比而算出的数值。
- 实际转速随负载大小而少量变化，变化范围为±8%左右。
- The speed in the table is the value of average motor speed (50Hz: 1300r/min, 60Hz: 1600r/min) divided by the reduction ratio.
- The actual speed changes according to the load (±8%).




标准减速箱  
STANDARD GEARBOX  
80GK □H



直角中空减速箱  
RIGHT ANGLE HOLLOW GEARBOX  
L80GK □RC



中间减速箱  
INTERMEDIATE GEARBOX  
80GM10



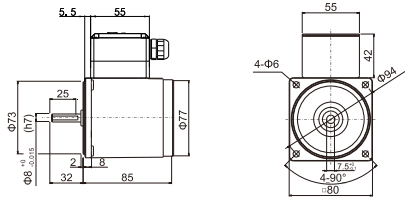
直角中实减速箱  
RIGHT ANGLE SOLID GEARBOX  
L80GK □RT

减速箱型号中的□为减速比的数值  
速比：1:3~200;中间减速箱：(1:10)  
□ in gearbox model indicates the reduction ratio (1:3~200);intermediate gearbox:(1:10)

外形尺寸 (CAD) DIMENSIONS

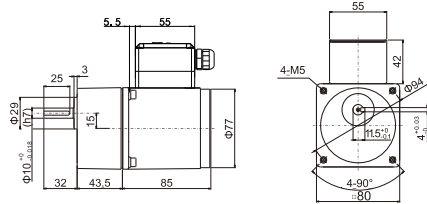
**25YS/YR01**

圆轴电机 重量:1.6kg  
Round-axis motor, weight:1.6kg



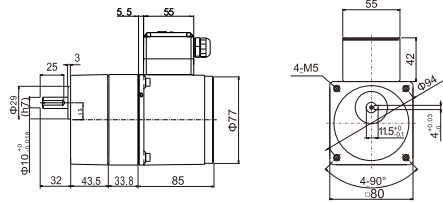
**25YS/YR02**

组合:电机+标准减速机(减速比:1:3~200) 重量:2.3kg  
Combination: motor+standard gearbox(reduction ratio:1:3~200), weight:2.3kg



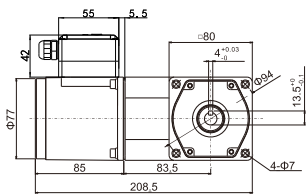
**25YS/YR03**

组合:电机+中间减速机+标准减速机(减速比:1:200~1800) 重量:2.8kg  
Combination: motor+intermediate gearbox+standard gearbox(reduction ratio:1:200~1800), weight:2.8kg



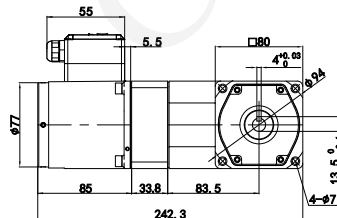
**25YS/YR04**

组合:电机+直角中实减速机(减速比:1:3~200) 重量:3.8kg  
Combination: motor+right angle solid gearbox(reduction ratio:1:3~200), weight:3.8kg



**25YS/YR05**

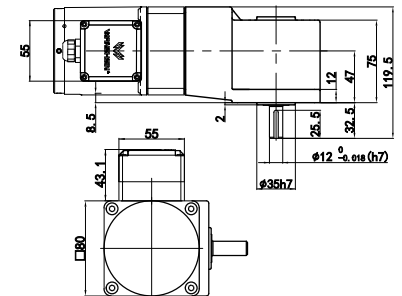
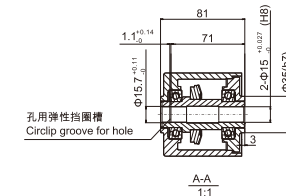
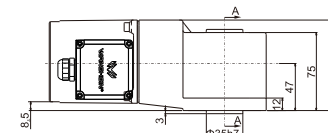
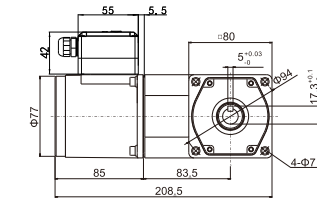
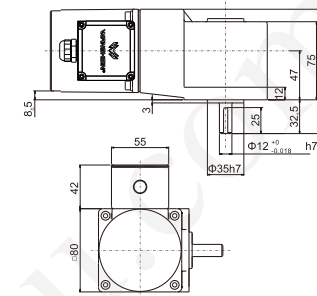
组合:电机+中间减速机+直角中实减速机(减速比:1:200~1800) 重量:4.3kg  
Combination: motor+intermediate gearbox+right angle solid gearbox(reduction ratio: 1: 200~1800), weight:4.3kg



外形尺寸 (CAD) DIMENSIONS

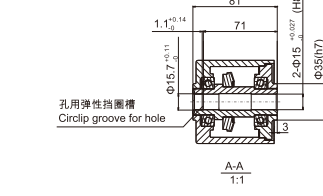
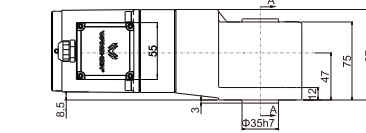
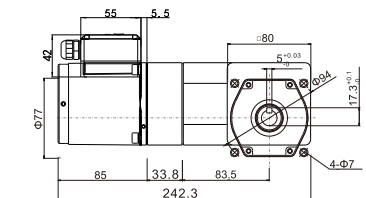
**25YS/YR06**

组合:电机+直角中空减速机(减速比:1:3~200) 重量:3.7kg  
Combination: motor+right angle hollow gearbox(reduction ratio:1:3~200), weight:3.7kg



**25YS/YR07**

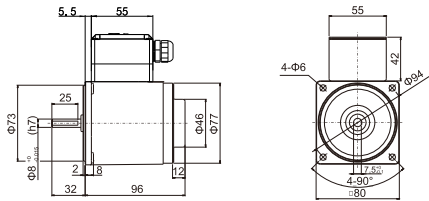
组合:电机+中间减速机+直角中空减速机(减速比:1:200~1800) 重量:4.2kg  
Combination: motor+intermediate gearbox+right angle hollow gearbox(reduction ratio:1:200~1800), weight:4.2kg



外形尺寸 (CAD) DIMENSIONS

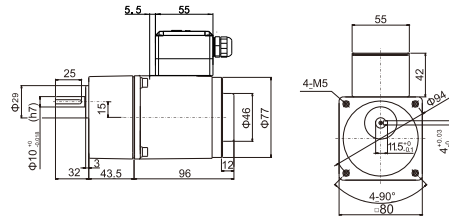
25YT01

圆轴电机 重量:1.7kg  
Round-axis motor, weight:1.7kg



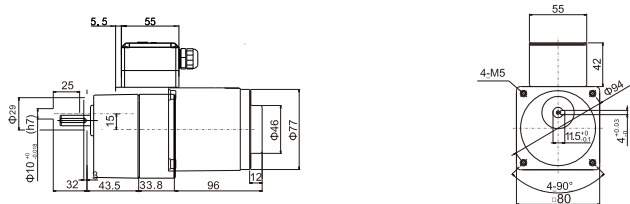
25YT02

组合:电机+标准减速机(减速比:1:3~200) 重量:2.4kg  
Combination: motor+standard gearbox (reduction ratio: 1:3~200), weight: 2.4kg



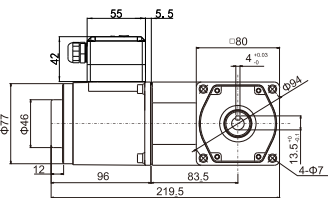
25YT03

组合:电机+中间减速箱+标准减速机(减速比:1:200~1800) 重量:2.9kg  
Combination: motor+intermediate gearbox+standard gearbox (reduction ratio: 1:200~1800), weight: 2.9kg



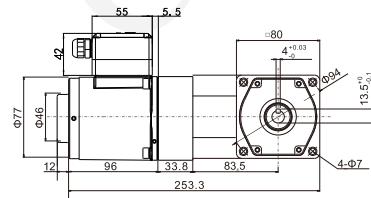
25YT04

组合:电机+直角中实减速机(减速比:1:3~200) 重量:3.8kg  
Combination: motor+right angle solid gearbox (reduction ratio: 1:3~200), weight: 3.8kg



25YT05

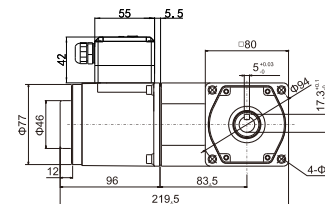
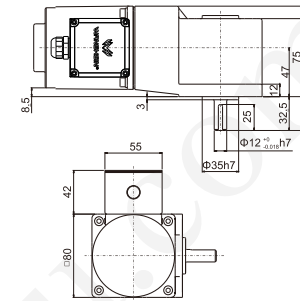
组合:电机+中间减速箱+直角中实减速机(减速比:1:200~1800) 重量:4.3kg  
Combination: motor+intermediate gearbox+right angle solid gearbox (reduction ratio: 1:200~1800), weight: 4.3kg



外形尺寸 (CAD) DIMENSIONS

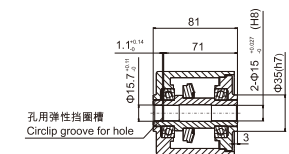
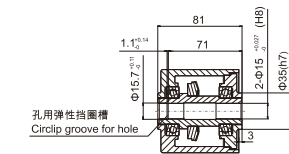
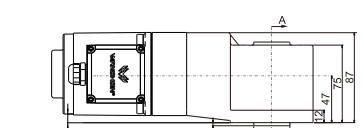
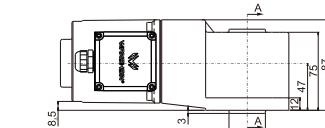
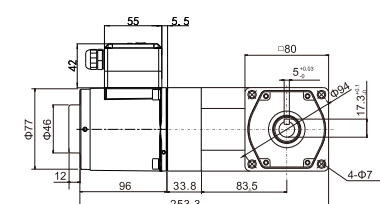
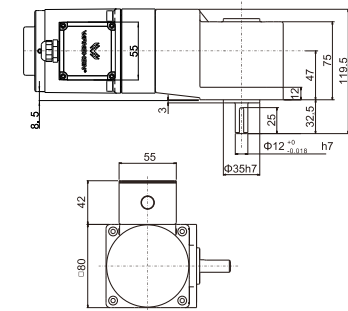
25YT06

组合:电机+直角中空减速机(减速比:1:3~200) 重量:3.7kg  
Combination: motor+right angle hollow gearbox (reduction ratio: 1:3~200), weight: 3.7kg



25YT07

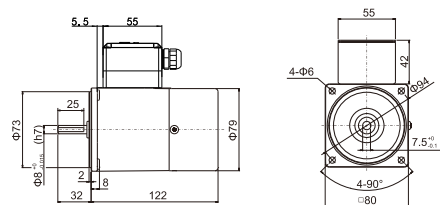
组合:电机+中间减速箱+直角中空减速机(减速比:1:200~1800) 重量:4.2kg  
Combination: motor+intermediate gearbox+right angle hollow gearbox (reduction ratio: 1:200~1800), weight: 4.2kg



外形尺寸 (CAD) DIMENSIONS

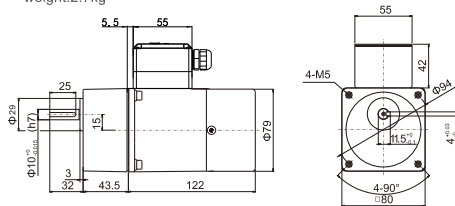
25YB01

圆轴电机 重量:2kg  
Round-axis motor, weight: 2kg



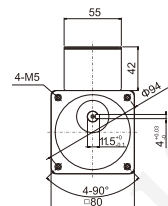
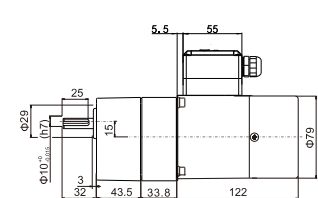
25YB02

组合:电机+标准减速机(减速比:1:3~200) 重量:2.7kg  
Combination: motor+standard gearbox (reduction ratio: 1:3~200), weight: 2.7kg



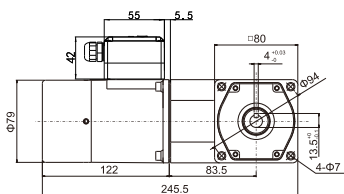
25YB03

组合:电机+中间减速机+标准减速机(减速比:1:200~1800) 重量:3.2kg  
Combination: motor+intermediate gearbox+standard gearbox (reduction ratio: 1:200~1800), weight: 3.2kg



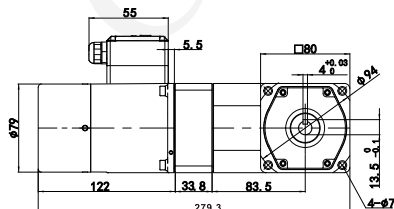
25YB04

组合:电机+直角中空减速机(减速比:1:3~200) 重量:3.8kg  
Combination: motor+right angle hollow gearbox (reduction ratio: 1:3~200), weight: 3.8kg

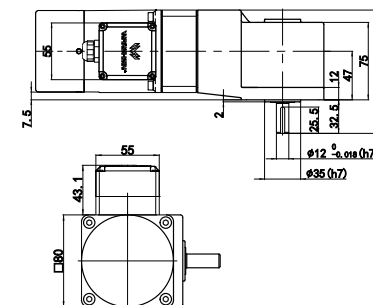
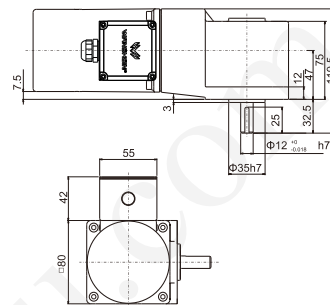


25YB05

组合:电机+中间减速机+直角中空减速机(减速比:1:200~1800) 重量:4.3kg  
Combination: motor+intermediate gearbox+right angle hollow gearbox (reduction ratio: 1:200~1800), weight: 4.3kg

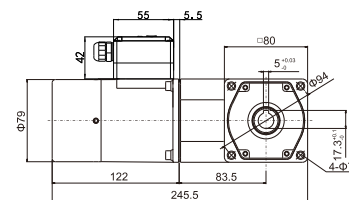


外形尺寸 (CAD) DIMENSIONS



25YB06

组合:电机+直角中空减速机(减速比:1:3~200) 重量:3.7kg  
Combination: motor+right angle hollow gearbox (reduction ratio: 1:3~200), weight: 3.7kg



25YB07

组合:电机+中间减速机+直角中空减速机(减速比:1:200~1800) 重量:4.2kg  
Combination: motor+intermediate gearbox+right angle hollow gearbox (reduction ratio: 1:200~1800), weight: 4.2kg

