

140W
160W

□100×100mm

各型号电机性能 MOTOR PERFORMANCE

型号 MODEL	最大输出功率(W) MAXIMUM OUTPUT POWER	电压V VOLTAGE	频率Hz FREQUENCY	电流A CURRENT	调速范围 r/min SPEED RANGE	起动转矩 N·mm START TORQUE	额定转矩(N·mm) RATED TORQUE		运行电容 RUNNING CAPACITOR	
							1200r/min	90r/min		
齿轮轴 GEAR SHAFT 100YS140GV11 100YT140GV11 100YB140GV11 100YF140GV11	140	Single phase 单相 110	50Hz	2.26	90-1300	840	1050	350	28μf/250V	
圆轴 ROUND SHAFT 100YS140DV11 100YT140DV11 100YB140DV11 100YF140DV11										60Hz
齿轮轴 GEAR SHAFT 100YS140GV22 100YT140GV22 100YB140GV22 100YF140GV22			50Hz	1.13	90-1300	840	1050	350		
圆轴 ROUND SHAFT 100YS140DV22 100YT140DV22 100YB140DV22 100YF140DV22										60Hz
齿轮轴 GEAR SHAFT 100YS140GY22 100YB140GY22	140	Three phase 三相 220	50Hz	0.95	90-1300	1393	1078			
圆轴 ROUND SHAFT 100YS140DY22 100YB140DY22			60Hz	0.88	90-1600	1183	875			
齿轮轴 GEAR SHAFT 100YS140GY38 100YB140GY38	140	Three phase 三相 380	50Hz	0.55	90-1300	1393	1078			
圆轴 ROUND SHAFT 100YS140DY38 100YB140DY38			60Hz	0.48	90-1600	1183	875			
齿轮轴 GEAR SHAFT 100YS160GV11 100YT160GV11 100YB160GV11 100YF160GV11	160	Single phase 单相 110	50Hz	2.60	90-1300	900	1250	28μf/250V		
圆轴 ROUND SHAFT 100YS160DV11 100YT160DV11 100YB160DV11 100YF160DV11			60Hz	2.34	90-1600	750	1250			
齿轮轴 GEAR SHAFT 100YS160GV22 100YT160GV22 100YB160GV22 100YF160GV22	160	Single phase 单相 220	50Hz	1.30	90-1300	900	1250		8μf/450V	
圆轴 ROUND SHAFT 100YS160DV22 100YT160DV22 100YB160DV22 100YF160DV22			60Hz	1.17	90-1600	750	1250			
齿轮轴 GEAR SHAFT 100YS160GY22 100YB160GY22	160	Three phase 三相 220	50Hz	1.21	90-1300	1590	1248			
圆轴 ROUND SHAFT 100YS160DY22 100YB160DY22			60Hz	1.09	90-1600	1353	1005			
齿轮轴 GEAR SHAFT 100YS160GY38 100YB160GY38	160	Three phase 三相 380	50Hz	0.70	90-1300	1590	1248			
圆轴 ROUND SHAFT 100YS160DY38 100YB160DY38			60Hz	0.50	90-1600	1353	1005			

•虽然调速电机的调速范围为：50Hz...90~1300r/min；60Hz...90~1600r/min。但由于低速时(<400r/min)，电机转矩下降较多，易发生过载，且电机直连风扇冷却效果差，易发热，因此必须预留足够的功率余量，并且不要经常工作在低速区。因此电机最佳调速范围为：50Hz...400~1300r/min；60Hz...400~1600r/min。

•在断开电源的同时，电机瞬间停止关保持负载。

•Although the speed range of the motor is 50Hz, 90~1300r/min, 60Hz, 90~1600r/min, it easily causes overload and the cooling effect of the motor fan is poor if the speed is too low (<400r/min) and the motor torque decreases too much; therefore, please keep sufficient power margin and avoid operating in low speed section frequently. The optimal speed range of the motor is 50Hz, 400~1300r/min, 60Hz, 400~1600r/min.

•When the power is cut off, the motor will stop immediately and hold the load.

减速箱减速比性能对照表 REDUCTION RATIO PERFORMANCE CHART

减速比 REDUCTION RATIO	3	3.6	5	6	7.5	10	12.5	15	18	20	25	30
140W 50Hz 最高转速r/min Output bearing speed	433	361	260	217	173	130	104	87	72	65	52	43
额定转矩N·m Rated torque	2.62	3.15	4.37	5.25	6.56	7.51	9.38	11.26	13.51	15.02	18.77	21.91
60Hz 最高转速r/min Output bearing speed	533	444	320	267	213	160	128	107	89	80	64	53
额定转矩N·m Rated torque	2.19	2.62	3.64	4.37	5.46	6.26	7.82	9.38	11.26	12.51	15.64	18.26
160W 50Hz 最高转速r/min Output bearing speed	433	361	260	217	173	130	104	87	72	65	52	43
额定转矩N·m Rated torque	2.76	3.31	4.60	5.52	6.90	9.20	11.5	13.8	16.56	18.4	23.0	27.6
60Hz 最高转速r/min Output bearing speed	533	444	320	267	213	160	128	107	89	80	64	53
额定转矩N·m Rated torque	2.48	2.98	4.14	4.97	6.21	8.28	10.35	12.42	14.9	16.56	20.7	24.84
减速比 REDUCTION RATIO	36	40	50	60	75	90	100	120	150	180	200	
140W 50Hz 最高转速r/min Output bearing speed	36	33	26	22	17	14	13	11	9	7	7	
额定转矩N·m Rated torque	26.29	29.21	33.94	40.73	44	44	44	44	44	44	44	
60Hz 最高转速r/min Output bearing speed	44	40	32	27	21	18	16	13	11	9	8	
额定转矩N·m Rated torque	21.91	24.34	28.28	33.94	40.73	44	44	44	44	44	44	
160W 50Hz 最高转速r/min Output bearing speed	36	33	26	22	17	14	13	11	9	7	7	
额定转矩N·m Rated torque	33.12	36.8	44	44	44	44	44	44	44	44	44	
60Hz 最高转速r/min Output bearing speed	44	40	32	27	21	18	16	13	11	9	8	
额定转矩N·m Rated torque	29.80	33.12	44	44	44	44	44	44	44	44	44	

•表中转速是以电机的平均转速(50Hz:1300r/min、60Hz:1600r/min)为基数除以减速比而算出的数值。

•实际转速随负载大小而少量变化，变化范围为±8%左右。

•The speed in the table is the value of average motor speed (50Hz: 1300r/min, 60Hz: 1600r/min) divided by the reduction ratio.

•The actual speed changes according to the load (±8%).



减速箱型号中的□为减速比的数值
速比：1:3~200
□ in gearbox model indicates the reduction ratio (1:3~200)

180W
200W

□100×100mm

各型号电机性能 MOTOR PERFORMANCE

型号 MODEL	最大输出功率(W) MAXIMUM OUTPUT POWER	电压V VOLTAGE	频率Hz FREQUENCY	电流A CURRENT	调速范围 r/min SPEED RANGE	起动转矩 N·mm START TORQUE	额定转矩(N·mm) RATED TORQUE		运行电容 RUNNING CAPACITOR			
							1200r/min	90r/min				
齿轮轴 GEAR SHAFT 100YS180GV11 100YT180GV11 100YB180GV11 100YF180GV11	180	Single phase 单相 110	50Hz	3.00	90-1300	1050	1450		32μf/250V			
圆轴 ROUND SHAFT 100YS180DV11 100YT180DV11 100YB180DV11 100YF180DV11			60Hz	2.70	90-1600	880	1450					
齿轮轴 GEAR SHAFT 100YS180GV22 100YT180GV22 100YB180GV22 100YF180GV22			180	Single phase 单相 220	50Hz	1.50	90-1300	1050		1450		10μf/450V
圆轴 ROUND SHAFT 100YS180DV22 100YT180DV22 100YB180DV22 100YF180DV22					60Hz	1.35	90-1600	880		1450		
齿轮轴 GEAR SHAFT 100YS180GY22 100YB180GY22	180	Three phase 三相 220			50Hz	1.30	90-1300	1790	1418		32μf/250V	
圆轴 ROUND SHAFT 100YS180DY22 100YB180DY22					60Hz	1.17	90-1600	1523	1135			
齿轮轴 GEAR SHAFT 100YS180GY38 100YB180GY38	180	Three phase 三相 380	50Hz	0.75	90-1300	1790	1418		10μf/450V			
圆轴 ROUND SHAFT 100YS180DY38 100YB180DY38			60Hz	0.67	90-1600	1523	1135					
齿轮轴 GEAR SHAFT 100YS200GV11 100YT200GV11 100YB200GV11 100YF200GV11	200	Single phase 单相 110	50Hz	3.38	90-1300	1150	1650			32μf/250V		
圆轴 ROUND SHAFT 100YS200DV11 100YT200DV11 100YB200DV11 100YF200DV11			60Hz	3.08	90-1600	930	1330					
齿轮轴 GEAR SHAFT 100YS200GV22 100YT200GV22 100YB200GV22 100YF200GV22			200	Single phase 单相 220	50Hz	1.69	90-1300	1150	1650		10μf/450V	
圆轴 ROUND SHAFT 100YS200DV22 100YT200DV22 100YB200DV22 100YF200DV22					60Hz	1.54	90-1600	930	1330			
齿轮轴 GEAR SHAFT 100YS200GY22 100YB200GY22	200	Three phase 三相 220			50Hz	1.82	90-1300	1990	1540			32μf/250V
圆轴 ROUND SHAFT 100YS200DY22 100YB200DY22					60Hz	1.64	90-1600	1690	1250			
齿轮轴 GEAR SHAFT 100YS200GY38 100YB200GY38	200	Three phase 三相 380	50Hz	1.05	90-1300	1990	1540		10μf/450V			
圆轴 ROUND SHAFT 100YS200DY38 100YB200DY38			60Hz	0.95	90-1600	1690	1250					

*虽然调速电机的调速范围为：50Hz...90~1300r/min；60Hz...90~1600r/min。但由于低速时(<400r/min)，电机转矩下降较多，易发生过载，且电机直连风扇冷却效果差，易发热，因此必须预留足够的功率余量，并且不要经常工作在低速区。因此电机最佳调速范围为：50Hz...400~1300r/min；60Hz...400~1600r/min。

*在断开电源的同时，电机瞬间停止关保持负载。

*Although the speed range of the motor is 50Hz, 90~1300r/min, 60Hz, 90~1600r/min, it easily causes overload and the cooling effect of the motor fan is poor if the speed is too low (<400r/min) and the motor torque decreases too much; therefore, please keep sufficient power margin and avoid operating in low speed section frequently. The optimal speed range of the motor is 50Hz, 400~1300r/min, 60Hz, 400~1600r/min.

*When the power is cut off, the motor will stop immediately and hold the load.

减速箱减速比性能对照表 REDUCTION RATIO PERFORMANCE CHART

减速比 REDUCTION RATIO		3	3.6	5	6	7.5	10	12.5	15	18	20	25	30	
180W	50Hz	最高转速r/min Output bearing speed	433	361	260	217	173	130	104	87	72	65	52	43
	60Hz	最高转速r/min Output bearing speed	533	444	320	267	213	160	128	107	89	80	64	53
200W	50Hz	最高转速r/min Output bearing speed	433	361	260	217	173	130	104	87	72	65	52	43
	60Hz	最高转速r/min Output bearing speed	533	444	320	267	213	160	128	107	89	80	64	53
额定转矩N·m Rated torque		3.10	3.72	5.16	6.19	7.74	10.32	12.9	15.48	18.58	20.64	25.8	30.96	
额定转矩N·m Rated torque		2.76	3.31	4.60	5.52	6.90	9.20	11.50	13.80	16.56	18.40	23.0	27.6	
额定转矩N·m Rated torque		3.44	4.13	5.73	6.88	8.60	11.46	14.33	17.19	18.51	20.57	25.71	30.85	
额定转矩N·m Rated torque		2.87	3.44	4.78	5.73	7.16	9.55	11.94	14.33	15.43	17.14	21.43	25.71	

减速比 REDUCTION RATIO		36	40	50	60	75	90	100	120	150	180	200	
180W	50Hz	最高转速r/min Output bearing speed	36	33	26	22	17	14	13	11	9	7	7
	60Hz	最高转速r/min Output bearing speed	44	40	32	27	21	18	16	13	11	9	8
200W	50Hz	最高转速r/min Output bearing speed	36	33	26	22	17	14	13	11	9	7	7
	60Hz	最高转速r/min Output bearing speed	44	40	32	27	21	18	16	13	11	9	8
额定转矩N·m Rated torque		37.15	41.28	44	44	44	44	44	44	44	44	44	44
额定转矩N·m Rated torque		33.48	37.2	44	44	44	44	44	44	44	44	44	44
额定转矩N·m Rated torque		37.02	41.14	44	44	44	44	44	44	44	44	44	44
额定转矩N·m Rated torque		30.85	34.28	42.85	44	44	44	44	44	44	44	44	44

*表中转速是以电机的平均转速(50Hz:1300r/min、60Hz:1600r/min)为基数除以减速比而算出的数值。
*实际转速随负载大小而少量变化，变化范围为±8%左右。
*The speed in the table is the value of average motor speed (50Hz: 1300r/min, 60Hz: 1600r/min) divided by the reduction ratio.
*The actual speed changes according to the load (±8%).



标准减速箱
STANDARD GEARBOX
100GF □H



直角中空减速箱
RIGHT ANGLE HOLLOW GEARBOX
L100GF □RC



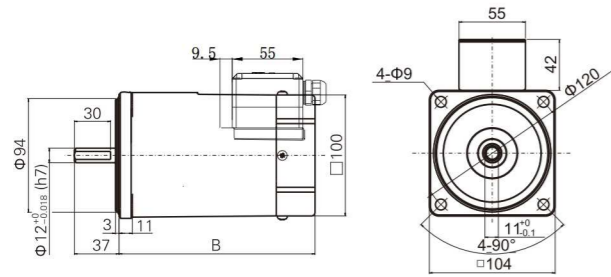
直角中实减速箱
RIGHT ANGLE SOLID GEARBOX
L100GF □RT

减速箱型号中的□为减速比的数值
速比：1:3~200
□ in gearbox model indicates the reduction ratio (1:3~200)

外形尺寸 (CAD) DIMENSIONS

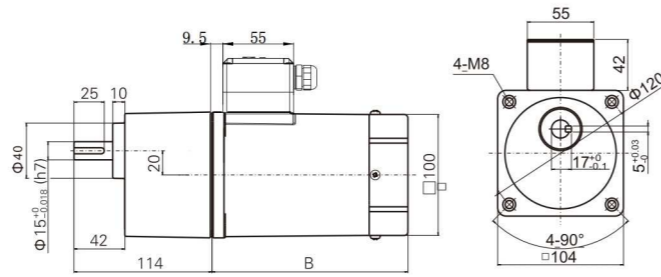
140/160/180/200/250YS/YT/YB/YF01

圆轴电机 重量:4.6kg
Round-axis motor, weight:4.6kg



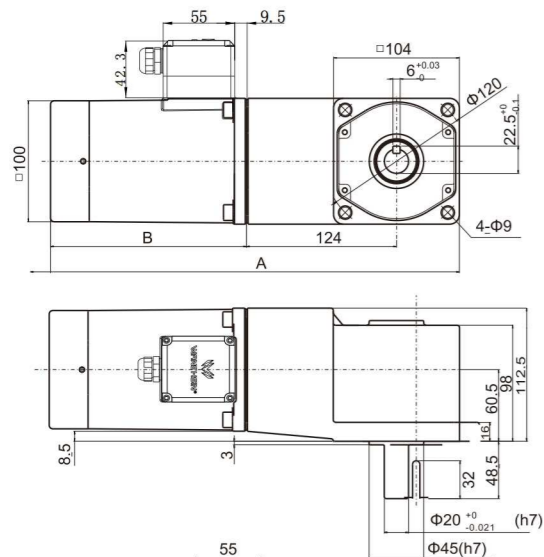
140/160/180/200/250YS/YT/YB/YF02

组合:电机+标准减速机(减速比:1:3~200) 重量:6.8kg
Combination: motor+standard gearbox (reduction ratio:1:3~200), weight:6.8kg



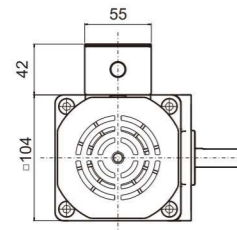
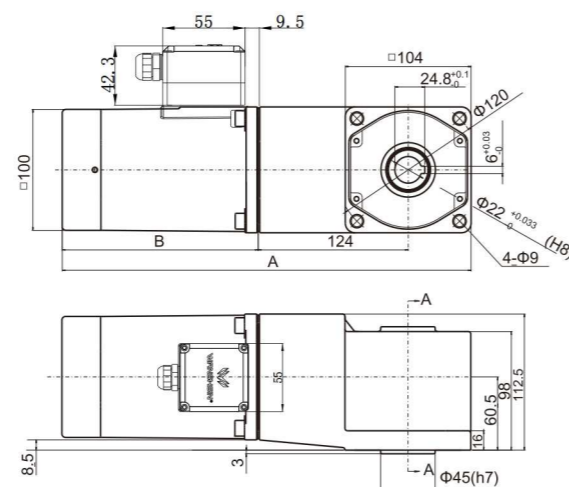
140/160/180/200/250YS/YT/YB/YF03

组合:电机+直角中实减速箱
减速比:1:3~200
重量:8.8kg
Combination: motor+right angle solid gearbox
reduction ratio:1:3~200
weight:8.8kg

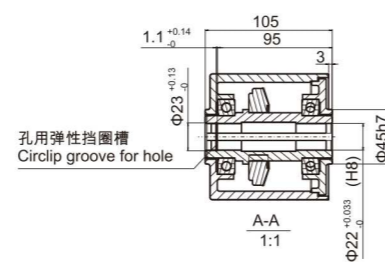


140/160/180/200/250YS/YT/YB/YF04

组合:电机+直角中空减速箱
减速比:1:3~200
重量:8.6kg
Combination: motor+right angle hollow gearbox
reduction ratio:1:3~200
weight:8.6kg



序号 No.	电机类型 Motor type	A	B
1	YS	338	162
2	YT	354	178
3	YB	368	192
4	YF	390	214



250W

□100×100mm

各型号电机性能 MOTOR PERFORMANCE

型号 MODEL	最大输出功率(W) MAXIMUM OUTPUT POWER	电压V VOLTAGE	频率Hz FREQUENCY	电流A CURRENT	调速范围 r/min SPEED RANGE	起动转矩 N·mm START TORQUE	额定转矩(N·mm) RATED TORQUE		运行电容 RUNNING CAPACITOR
							1200r/min	90r/min	
齿轮轴 GEAR SHAFT	100YS250GV11 100YT250GV11 100YB250GV11 100YF250GV11	250	Single phase 单相 110	50Hz	3.60	90-1300	1250	1850	40uf/250V
圆轴 ROUND SHAFT	100YS250DV11 100YT250DV11 100YB250DV11 100YF250DV11			60Hz	2.24	90-1600	980	1850	
齿轮轴 GEAR SHAFT	100YS250GV22 100YT250GV22 100YB250GV22 100YF250GV22	250	Single phase 单相 220	50Hz	1.80	90-1300	1250	1850	12uf/450V
圆轴 ROUND SHAFT	100YS250DV22 100YT250DV22 100YB250DV22 100YF250DV22			60Hz	1.62	90-1600	980	1850	
齿轮轴 GEAR SHAFT	100YS250GY22 100YB250GY22	250	Three phase 三相 220	50Hz	1.82	90-1300	2110	1670	
圆轴 ROUND SHAFT	100YS250DY22 100YB250DY22			60Hz	1.64	90-1600	1860	1380	
齿轮轴 GEAR SHAFT	100YS250GY38 100YB250GY38	250	Three phase 三相 380	50Hz	1.05	90-1300	2110	1670	
圆轴 ROUND SHAFT	100YS250DY38 100YB250DY38			60Hz	0.95	90-1600	1860	1380	

•虽然调速电机的调速范围为：50Hz...90~1300r/min；60Hz...90~1600r/min。但由于低速时(<400r/min)，电机转矩下降较多，易发生过载，且电机直连风扇冷却效果差，易发热，因此必须预留足够的功率余量，并且不要经常工作在低速区。因此电机最佳调速范围为：50Hz...400~1300r/min；60Hz...400~1600r/min。

•在断开电源的同时，电机瞬间停止关保持负载。

•Although the speed range of the motor is 50Hz, 90~1300r/min, 60Hz, 90~1600r/min, it easily causes overload and the cooling effect of the motor fan is poor if the speed is too low (<400r/min) and the motor torque decreases too much; therefore, please keep sufficient power margin and avoid operating in low speed section frequently. The optimal speed range of the motor is 50Hz, 400~1300r/min, 60Hz, 400~1600r/min.

•When the power is cut off, the motor will stop immediately and hold the load.

减速箱减速比性能对照表 REDUCTION RATIO PERFORMANCE CHART

减速比 REDUCTION RATIO	3	3.6	5	6	7.5	10	12.5	15	18	20	25	30
250W 50Hz 最高转速r/min Output bearing speed	433	361	260	217	173	130	104	87	72	65	52	43
额定转矩N·m Rated torque	4.26	5.11	7.1	8.52	10.65	14.2	17.75	21.3	25.56	28.4	35.5	42.6
60Hz 最高转速r/min Output bearing speed	533	444	320	267	213	160	128	107	89	80	64	53
额定转矩N·m Rated torque	3.83	4.6	6.39	7.67	9.59	12.78	15.98	19.17	23	25.56	31.95	38.34
减速比 REDUCTION RATIO	36	40	50	60	75	90	100	120	150	180	200	
140W 50Hz 最高转速r/min Output bearing speed	36	33	26	22	17	14	13	11	9	7	7	
额定转矩N·m Rated torque	44	44	44	44	44	44	44	44	44	44	44	
60Hz 最高转速r/min Output bearing speed	44	40	32	27	21	18	16	13	11	9	8	
额定转矩N·m Rated torque	44	44	44	44	44	44	44	44	44	44	44	

表中转速是以电机的平均转速(50Hz:1300r/min、60Hz:1600r/min)为基数除以减速比而算出的数值。
 实际转速随负载大小而少量变化，变化范围为±8%左右。
 *The speed in the table is the value of average motor speed (50Hz: 1300r/min, 60Hz: 1600r/min) divided by the reduction ratio.
 *The actual speed changes according to the load (±8%).



标准减速箱
STANDARD GEARBOX
100GF □H



直角中空减速箱
RIGHT ANGLE HOLLOW GEARBOX
L100GF □RC



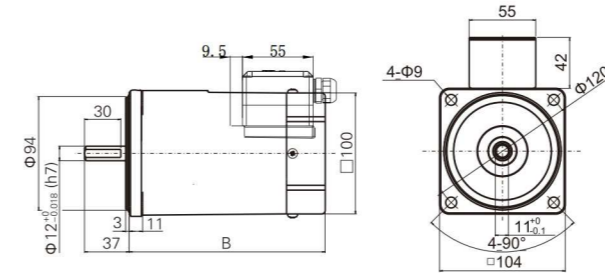
直角中实减速箱
RIGHT ANGLE SOLID GEARBOX
L100GF □RT

减速箱型号中的□为减速比的数值
 速比：1:3~200
 □ in gearbox model indicates the reduction ratio (1:3~200)

外形尺寸 (CAD) DIMENSIONS

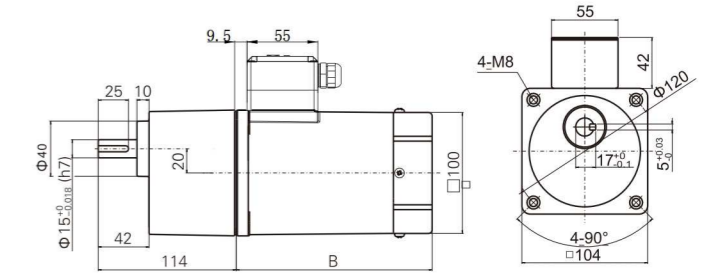
140/160/180/200/250YS/YT/YB/YF01

圆轴电机 重量:4.6kg
 Round-axis motor, weight:4.6kg



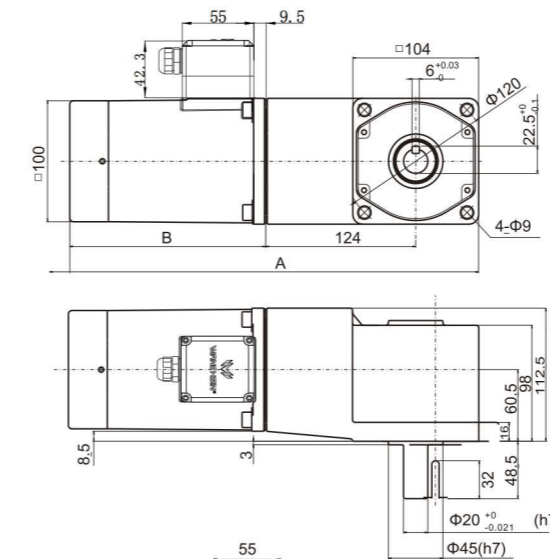
140/160/180/200/250YS/YT/YB/YF02

组合:电机+标准减速机(减速比:1:3~200) 重量:6.8kg
 Combination: motor+standard gearbox(reduction ratio:1:3~200), weight:6.8kg



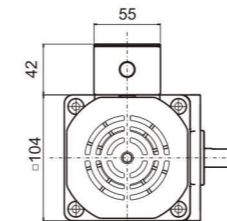
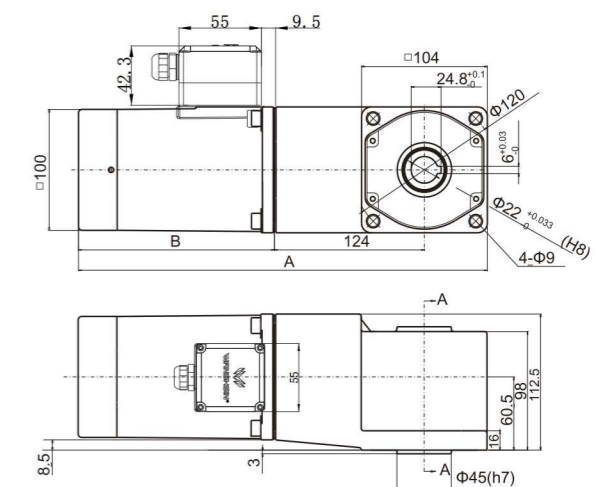
140/160/180/200/250YS/YT/YB/YF03

组合:电机+直角中实减速箱
 减速比:1:3~200
 重量:8.8kg
 Combination: motor+right angle solid gearbox
 reduction ratio:1:3~200
 weight:8.8kg



140/160/180/200/250YS/YT/YB/YF04

组合:电机+直角中空减速箱
 减速比:1:3~200
 重量:8.6kg
 Combination: motor+right angle hollow gearbox
 reduction ratio:1:3~200
 weight:8.6kg



序号 No.	电机类型 Motor type	A	B
1	YS	338	162
2	YT	354	178
3	YB	368	192
4	YF	390	214

